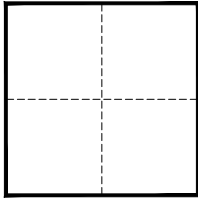


CORNER RECORD

Agency Index CR24-035Document Number 028-112-01City of MILL VALLEY County of MARIN, CaliforniaBrief Legal Description FOUND 5/8" REBAR WITH CAP "PLS 7053", AS SHOWN ON 2014 M 186, BEING A PORTION OF LOT 51, TAMALPAIS L & W CO MAP NO 5, RACK 1, PULL 2, MARIN COUNTY RECORDS**CORNER TYPE****COORDINATES (OPTIONAL)**

- ☐ Government Corner ☐ Control
☐ Meander ☒ Property
☐ Rancho ☐ Other

Date of Survey 03/05/2024

N. _____ E. _____

Elevation _____

Units ☐ Metric ☐ U.S. Survey Foot

Horizontal Datum _____

Zone _____ Epoch Date _____

Vertical Datum _____

☐ Complies with Public Resources Code §§8801-8819☐ Complies with Public Resources Code §§8890-8902PLS Act Ref.: ☐ 8765(d) ☒ 8771 ☐ 8773 ☐ Other:

Corner/
Monument: ☒ Left as found ☐ Established ☐ Rebuilt ☒ Pre-Construction
☐ Found and tagged ☐ Reestablished ☒ Referenced ☐ Post-Construction

Narrative of corner identified and monument as found, set, reset, replaced, or removed:

☒ See sheet #2 for description(s):

SEE REFERENCE POINTS ON PAGE 2, USED FOR PERPETUATION THROUGH CONSTRUCTION.

NOTE:

NO WARRANTY IS EXPRESSED OR IMPLIED THAT THE MONUMENTS SHOWN HEREON HAVE BEEN SET IN THE CORRECT LOCATION BY THE ORIGINAL SURVEYOR OR ENGINEER.

SURVEYOR'S STATEMENT

This Corner Record was prepared by me or under my direction in conformance with
the Professional Land Surveyors' Act on May 15, 2024
Signed Joel F. Paulson P.L.S. or R.C.E. No. 6637

**COUNTY SURVEYOR'S STATEMENT**

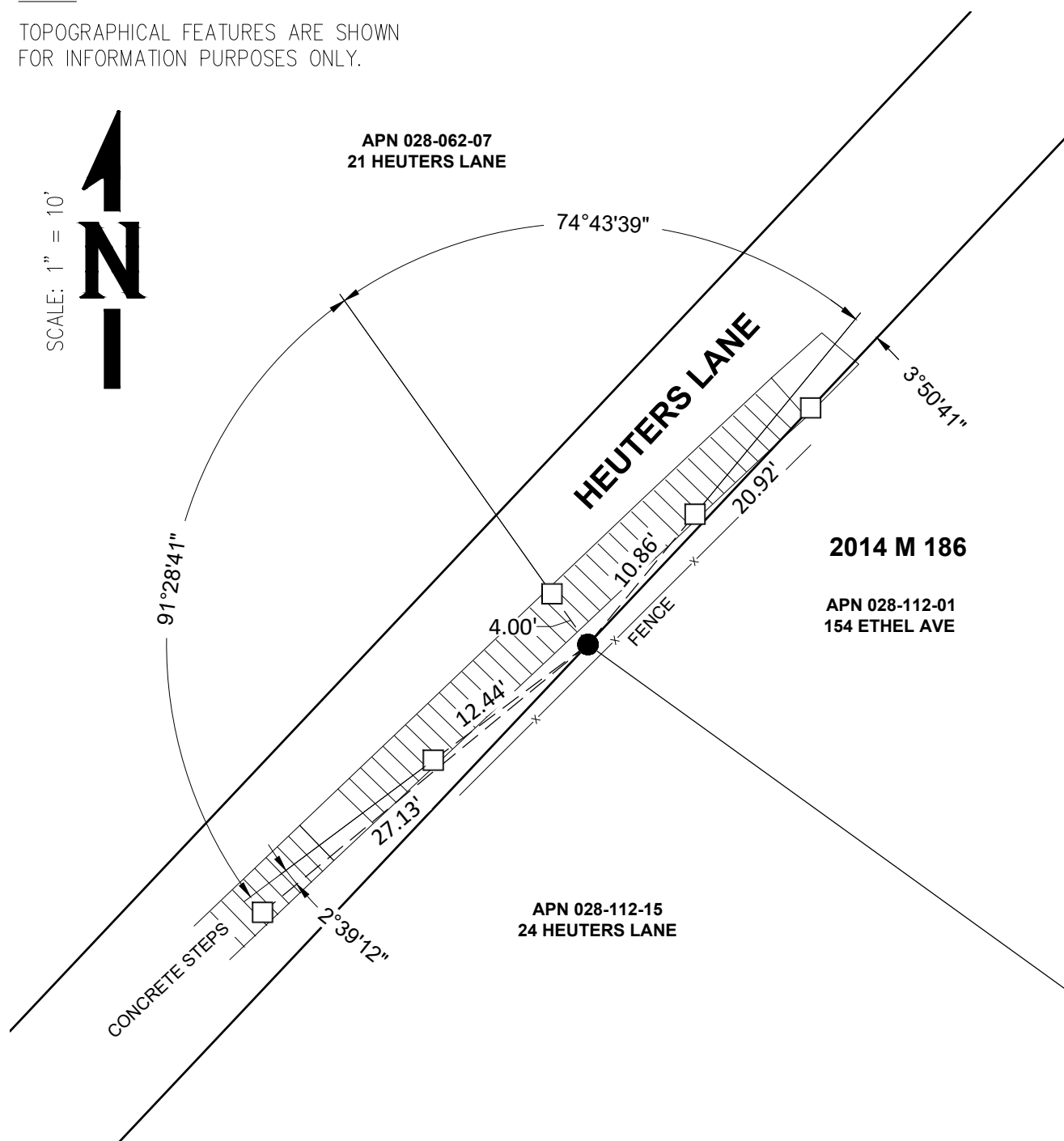
This Corner Record was received May 15, 2024
and examined and filed May 22, 2024
Signed T.W. Park P.L.S. 8176
Title County Surveyor

County Surveyor's Comment



NOTE

TOPOGRAPHICAL FEATURES ARE SHOWN
FOR INFORMATION PURPOSES ONLY.

**LEGEND**

- FOUND 5/8" REBAR WITH PLASTIC CAP "PLS 7053", AS SHOWN ON 2014 MAPS 186.
- SET MAG NAIL IN CONCRETE WITH 3/4" BRASS TAG, STAMPED "RP LS 6637".