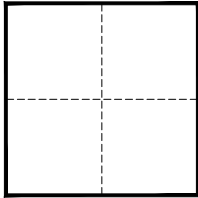


CORNER RECORD

Agency Index CR24-037Document Number 028-181-12(b)City of MILL VALLEY County of MARIN, CaliforniaBrief Legal Description FOUND 3/4" IRON PIPE WITH PLASTIC CAP "DANSKIN PLS 4794" AS SHOWN ON 2017 MAPS 94, MARIN COUNTY RECORDS.**CORNER TYPE****COORDINATES (OPTIONAL)**

- ☐ Government Corner ☐ Control
☐ Meander ☒ Property
☐ Rancho ☐ Other

Date of Survey 03/05/2024

N. _____ E. _____

Elevation _____

Units ☐ Metric ☐ U.S. Survey Foot

Horizontal Datum _____

Zone _____ Epoch Date _____

Vertical Datum _____

☐ Complies with Public Resources Code §§8801-8819☐ Complies with Public Resources Code §§8890-8902PLS Act Ref.: ☐ 8765(d) ☒ 8771 ☐ 8773 ☐ Other:Corner/
Monument: ☒ Left as found ☐ Established ☐ Rebuilt ☒ Pre-Construction☐ Found and tagged ☐ Reestablished ☒ Referenced ☐ Post-Construction

Narrative of corner identified and monument as found, set, reset, replaced, or removed:

☒ See sheet #2 for description(s):

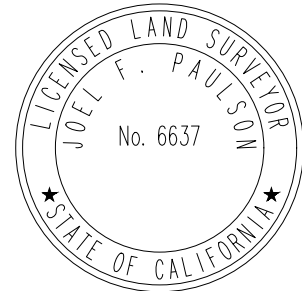
SEE REFERENCE POINTS ON PAGE 2, USED FOR PERPETUATION THROUGH CONSTRUCTION.

NOTE:

NO WARRANTY IS EXPRESSED OR IMPLIED THAT THE MONUMENTS SHOWN HEREON HAVE BEEN SET IN THE CORRECT LOCATION BY THE ORIGINAL SURVEYOR OR ENGINEER.

SURVEYOR'S STATEMENT

This Corner Record was prepared by me or under my direction in conformance with

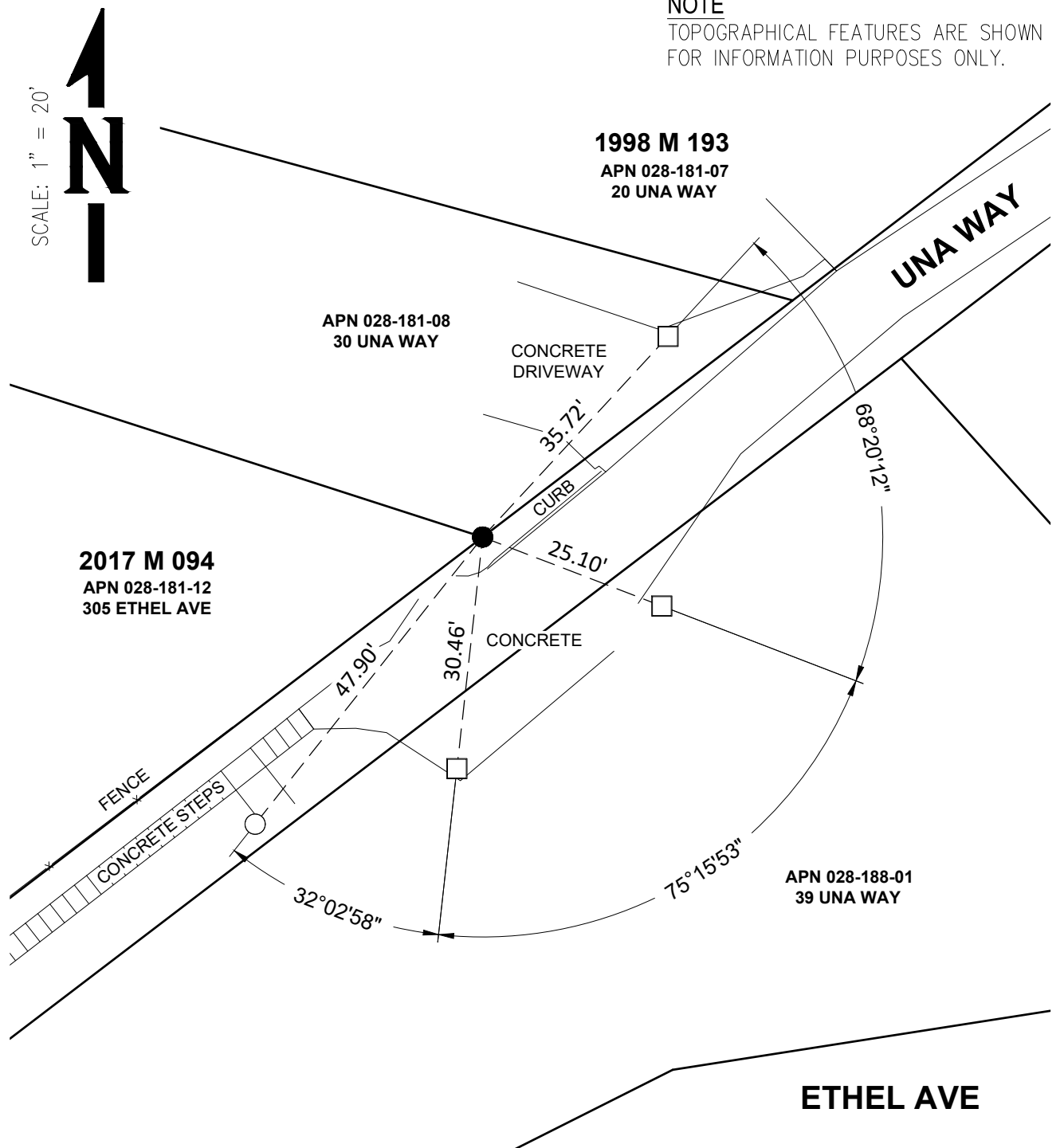
the Professional Land Surveyors' Act on May 15, 2024Signed Joel F. Paulson P.L.S. or R.C.E. No. 6637**COUNTY SURVEYOR'S STATEMENT**This Corner Record was received May 15, 2024and examined and filed May 22, 2024Signed T.W.P. P.L.S. 8176Title County Surveyor

County Surveyor's Comment



NOTE

TOPOGRAPHICAL FEATURES ARE SHOWN
FOR INFORMATION PURPOSES ONLY.

**LEGEND**

- FOUND 3/4" IRON PIPE WITH PLASTIC CAP "DANSKIN PLS 4794" AS SHOWN ON 2017 MAPS 94.
- SET MAG NAIL IN CONCRETE WITH 3/4" BRASS TAG, STAMPED "RP LS 6637".
- SET 3/4" IRON PIPE WITH 3/4" BRASS TAG, STAMPED "RP LS 6637".