

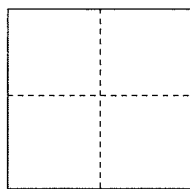
CORNER RECORD

Documented Number AP No. 38-391-07

City of Tiburon

County of Marin, California

Brief Legal Description Being Lot 7, as shown on Map of Paradise Cay Unit 1 (17 RM 86)



CORNER TYPE

Government Corner ☐ Control ☐
Meander ☐ Property ☒
Rancho ☐ Other ☐

COORDINATES(Optional)

N. _____
E. _____

Zone _____ NAD27 ☐ NAD83 ☐

NAD83 Epoch _____

Elevation _____

Date of Survey March, 2013

Vert. Datum: NGVD 29 ☐ NADV88 ☐

Meas. Units: Metric ☐ Imperial ☐

Corner- Left as found ☐ Found and tagged ☐ Established ☐ Reestablished ☒ Rebuilt ☐

Identification and type of corner found: Evidence used to identify or procedure used to establish or reestablish the corner:

Found standard street monuments per Map of Paradise Cay, South Unit 1, Recorded in Book 17 of Maps, at
Page 86, Marin County Records, See page 2

A description of the physical condition of the monument as found and as set or reset:

Set 3/4" iron pipe and plastic plug, "LS 5814" as shown on page 2

SURVEYOR'S STATEMENT

This Corner Record was prepared by me or under my direction in conformance with

the Land Surveyor's Act on March 2013

Signed William E. Schroeder P.L.S. or R.C.E. No.: LS 5814

COUNTY SURVEYOR'S STATEMENT

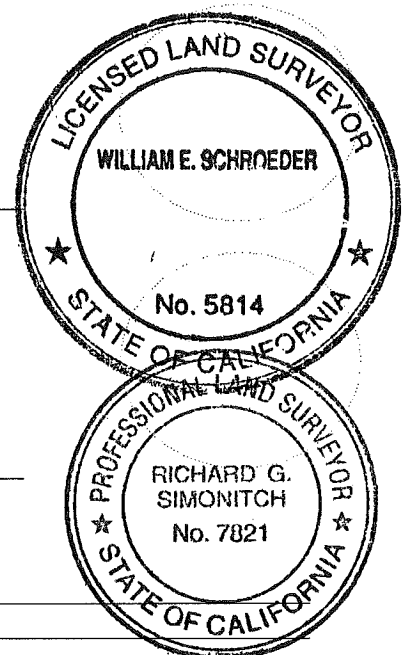
This Corner Record was received MAY 16, 2013 and examined

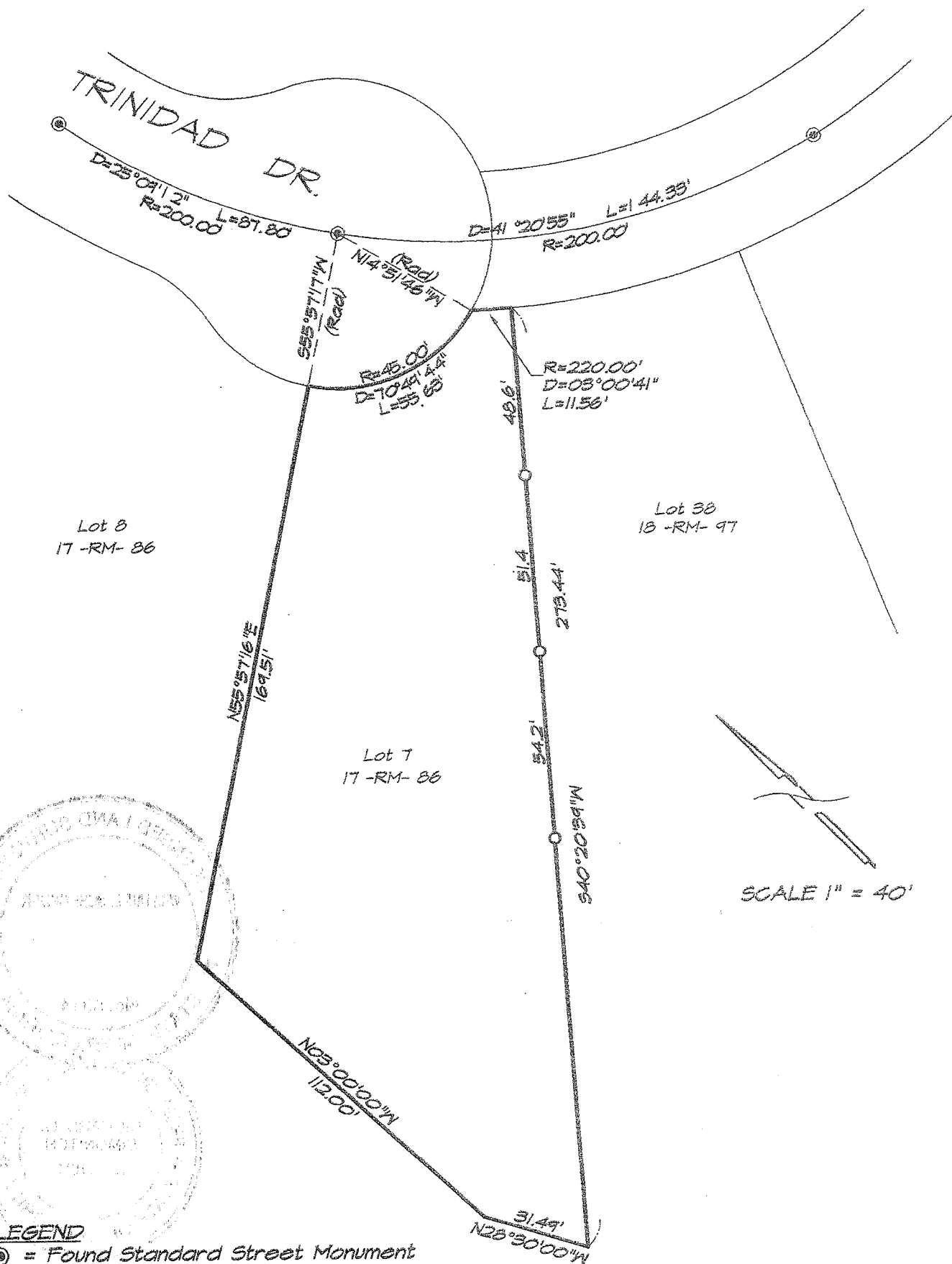
and filed JUNE 25, 2013

Signed Richard G. Simonitch P.L.S. or R.C.E. No.: 7821

Title DEPUTY CO. SURVEYOR

County Surveyor's Comment _____





SCALE 1" = 40'

LEGEND

- ⊙ = Found Standard Street Monument
- = Set 3/4" Iron Pipe with plastic cap
"LS 5814"