

# CORNER RECORD

Document Number

046-010-27

City of Mill ValleyCounty of Marin

California

Brief Legal Description

Lot 5 of Book 20 RM Page 97

## CORNER TYPE

## COORDINATES (Optional)


Government Corner

Control

North

Meander

Property

☒

East

Rancho

Other

Zone

Datum

Date of Survey

September 25, 2015

Elev.

Corner

Left as found ☐Found and tagged ☐Established ☐Reestablished ☒Rebuilt ☐

Identification and type of corner found: Evidence used to identify or procedure used to establish or reestablish the corner:

Found Pin with 2" Cap Tagged LS 2932 Per 20 RM 97. Held Record Bearings and Distance.

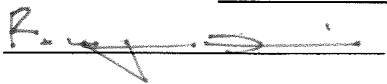
A description of the physical condition of the monument as found and as set or reset:

Set 1/2" Rebar with Cap Tagged LS 6330 at angle point. Set 1"x2" Stake with tack, 2"x2" Hub with tack or Mag Nail along Property Line (see attached plat).

## SURVEYOR'S STATEMENT

This Corner Record was prepared by me or under my direction in conformance with the Land Surveyors' Act on November 22, 2015

Signed



L.S. Number

LS 6330

## COUNTY SURVEYOR'S STATEMENT

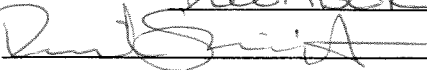
This Corner Record was received

DECEMBER 3, 2015

and examined and filed

DECEMBER 11, 2015

Signed



Title

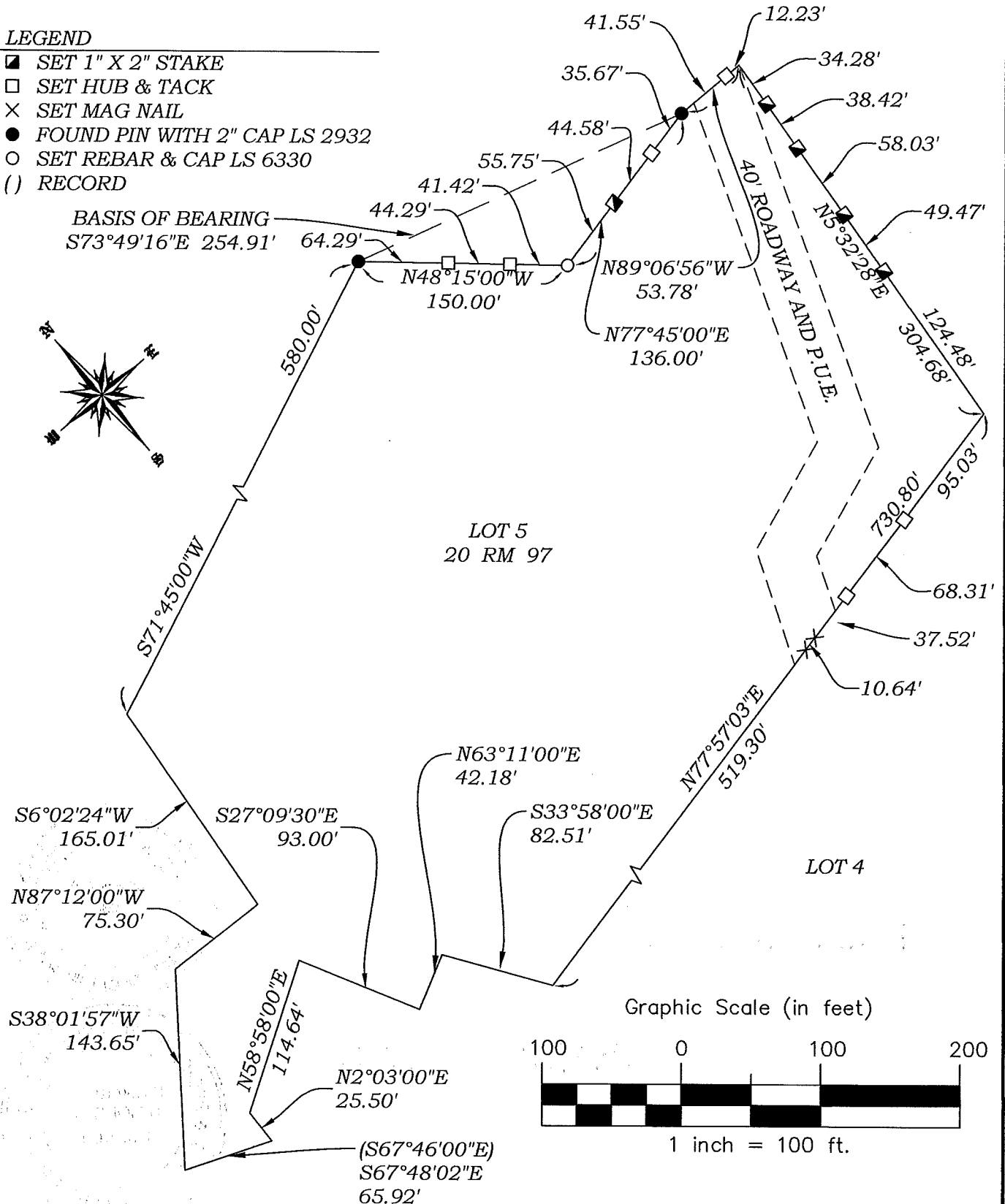
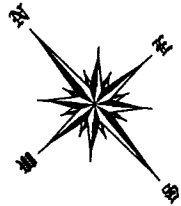
County Surveyor

County Surveyor's Comment

# LEGEND

- SET 1" X 2" STAKE
- SET HUB & TACK
- × SET MAG NAIL
- FOUND PIN WITH 2" CAP LS 2932
- SET REBAR & CAP LS 6330
- ( ) RECORD

BASIS OF BEARING  
S73°49'16"E 254.91'



R.W. DAVIS & ASSOCIATES, INC.  
LAND SURVEYORS

45 Leveroni Court  
Novato CA 94949  
L.S. 6330

Tel. (415) 883-9099  
Fax (415) 883-2016  
Email: rwdavis@rwdavis-survey.com

© 2013

Rev.

Job No. 434-003

Date: 11-22-15

Scale: 1" = 100'

CORNER RECORD

APN 046-010-27