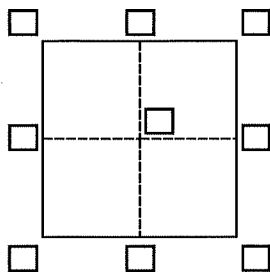


CORNER RECORD

Agency Index

Document Number

DAW# 19-003

City of Mill Valley County of Marin, CaliforniaBrief Legal Description Lot 5, "Mount Tamalpais Estates Subdivision", 20 RM 97, M.C.R.APN 046-010-27

CORNER TYPE

Government Corner ☐Control ☐Meander ☐Property ☒Rancho ☐Other ☐

COORDINATES (Optional)

N. _____ E. _____

Elevation _____

Units ☒Metric ☐U.S. Survey Foot ☒

Horizontal Datum _____

Zone _____ Epoch Date _____

Date of Survey December 17, 2018

Vertical Datum _____

& December 20, 2018

☐ Complies with Public Resources Code §§8801-8819☐ Complies with Public Resources Code §§8890-8902

PLS Act Ref.:

☒ 8765(d)☐ 8771☐ 8773☐ Other:Corner/
Monument:☐ Left as found☐ Established☐ Rebuilt☐ Pre-Construction☐ Found and tagged☒ Reestablished☐ Referenced☐ Post-Construction

Narrative of corner identified and monument as found, set, reset, replaced, or removed:

☒ See sheet #2 for description(s):

Found pins w/ 2" cap(tagged) LS2932 to be in good condition and record position and used to set (1) 1/2" iron pipe and (7) 3/8" rebar & cap property corners as shown on page 2.

This Corner Record meets the requirements of the PLS Act and retraces the boundary of Lot 5 of 20 R.M. 97. The County Survey comments below, if noted, is the opinion of PLS Tracy W. Park and carries no more authority or weight and is no more valid than the opinion of the surveyor who prepared this corner record. This corner record is technically correct and meets the requirements of Section 8700 of the California Professional Land Surveyors' Act.

SURVEYOR'S STATEMENT

This Corner Record was prepared by me or under my direction in conformance with

the Professional Land Surveyors' Act on January 15, 2019

Signed

P.L.S. or ~~R.C.E.~~ No.7237

COUNTY SURVEYOR'S STATEMENT

This Corner Record was received

JANUARY 22, 2019

and examined and filed

OCT. 03, 2019

Signed

P.L.S. or R.C.E. No.

9292

Title

DEPUTY C.S.

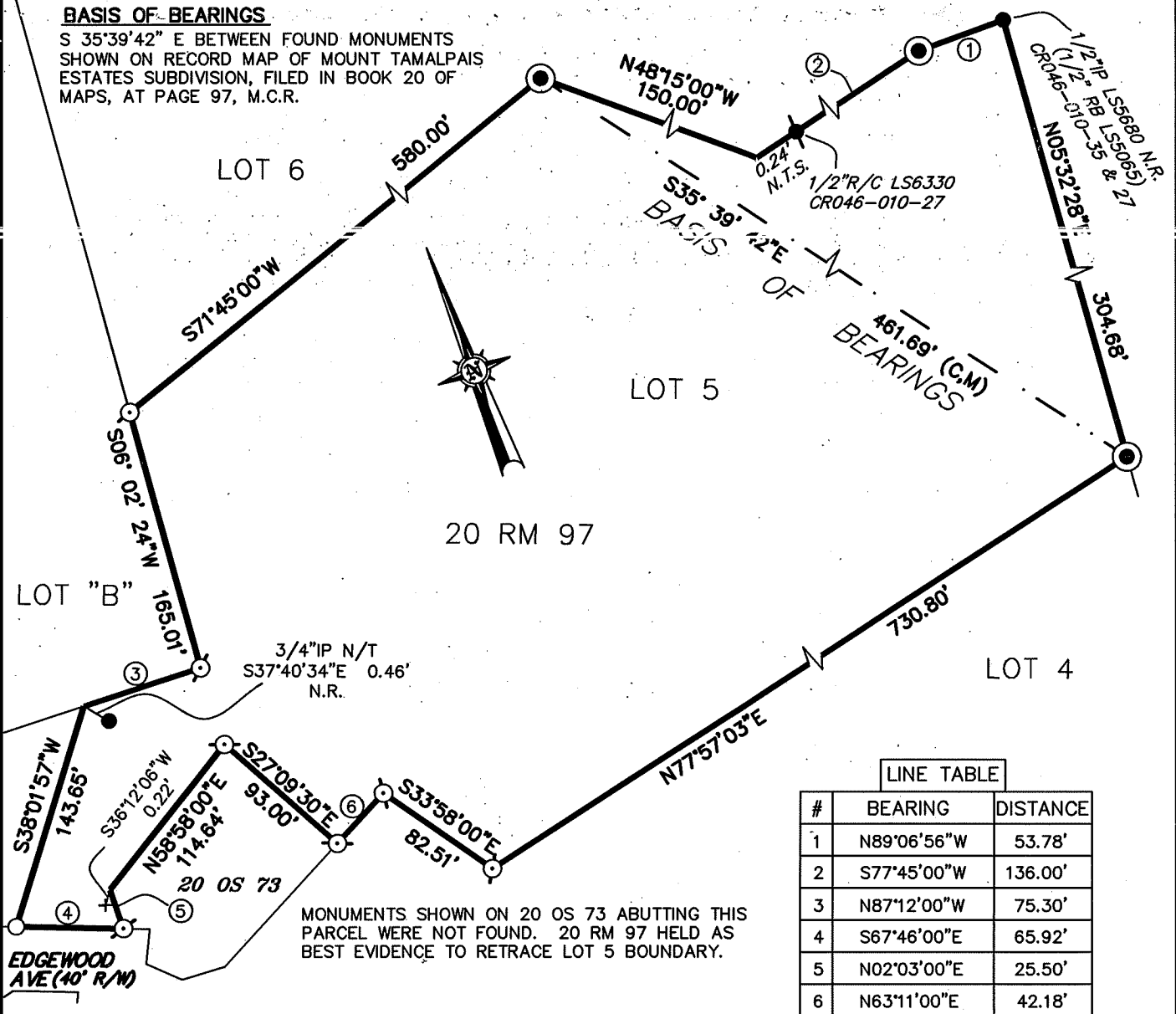
County Surveyor's Comment



It is the opinion of the Deputy County Surveyor that the filing of this Corner Record does not comply with Business and Professions Code Section 8765(d), as sufficient monumentation was not shown to establish the precise locations of the southerly property corners and lines. Monuments or other evidence may exist and if recovered and considered in determining the location of the subject property's corners and lines, may result in materially alternate positions thereof.

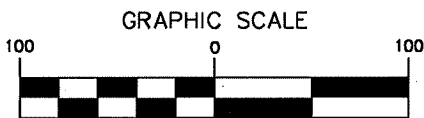
BASIS OF BEARINGS

S 35°39'42" E BETWEEN FOUND MONUMENTS
SHOWN ON RECORD MAP OF MOUNT TAMALPAIS
ESTATES SUBDIVISION, FILED IN BOOK 20 OF
MAPS, AT PAGE 97, M.C.R.

**NOTES:**

ALL COURSES SHOWN HEREON ARE RECORD AND MEASURED
PER RECORD MAP OF MOUNT TAMALPAIS ESTATES SUBDIVISION;
20 RM 97, MARIN COUNTY RECORDS.

ALL DISTANCES SHOWN ARE IN FEET AND DECIMALS THEREOF.



(IN FEET)

1 inch = 100 ft.

michael ford inc.
land surveying

2300 bethards drive, suite J
santa rosa • california 95405
p 707.542.8513 - f 707.542.1825
www.michaelfordinc.com

LEGEND

- SET 1/2" IRON PIPE, TAGGED LS7237
- ⊙ SET 3/8" REBAR/CAP, LS7237
- FOUND PIN W/ 2"CAP, LS2932
- FOUND IRON PIPE, AS SHOWN
- ⊕ FOUND REBAR, AS SHOWN
- + FOUND CROSS, CUT IN CONC. D/W, NR
- IP IRON PIPE
- R/C REBAR AND CAP
- CR CORNER RECORD
- N.R. NO RECORD
- N.T. NO TAG
- N.T.S. NO TO SCALE
- (C,M) CALCULATED AND MEASURED