

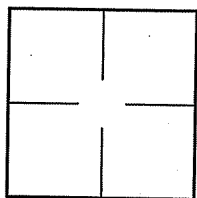
CORNER RECORD

Document Number A.P.# 046-330-32

City of MILL VALLEY

County of MARIN, California

Brief Legal Description LOT 8, 24 O.S. 73



CORNER TYPE

COORDINATES (Optional)

Government Corner ☐ Control ☐
 Meander ☐ Property ☒
 Rancho ☐ Other ☐
 Date of Survey 09/27/10

N. _____
 E. _____
 Zone _____ NAD27 ☐ NAD83 ☐
 NAD83 Epoch _____
 Elev. _____
 Vert. Datum: NGVD29 ☐ NAVD88 ☐
 Meas. Units: Metric ☐ Imperial ☐

Corner- Left as found ☒ Found and tagged ☐ Established ☐ Reestablished ☒ Rebuilt ☐

Identification and type of corner found: Evidence used to identify or procedure used to establish or reestablish the corner:
REESTABLISHED LOT 8 USING MONUMENTS FOUND IN WALSH DRIVE AND AS SHOWN ON SHEET 2

A description of the physical condition of the monument as found and as set or reset: SEE SHEET 2.

SURVEYOR'S STATEMENT

This Corner Record was prepared by me or under my direction in conformance with

the Land Surveyor's Act on SEPTEMBER 27 2010

Signed Lawrence P. Doyle P.L.S. or R.C.E. No. P.L.S. 4694



COUNTY SURVEYOR'S STATEMENT

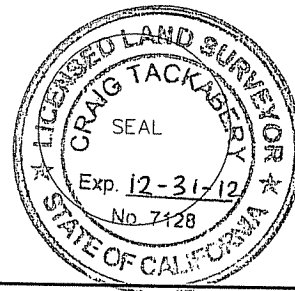
This Corner Record was received DECEMBER 8, 2010

and examined and filed JANUARY 6, 2011

Signed [Signature] P.L.S. or R.C.E. No. 7128

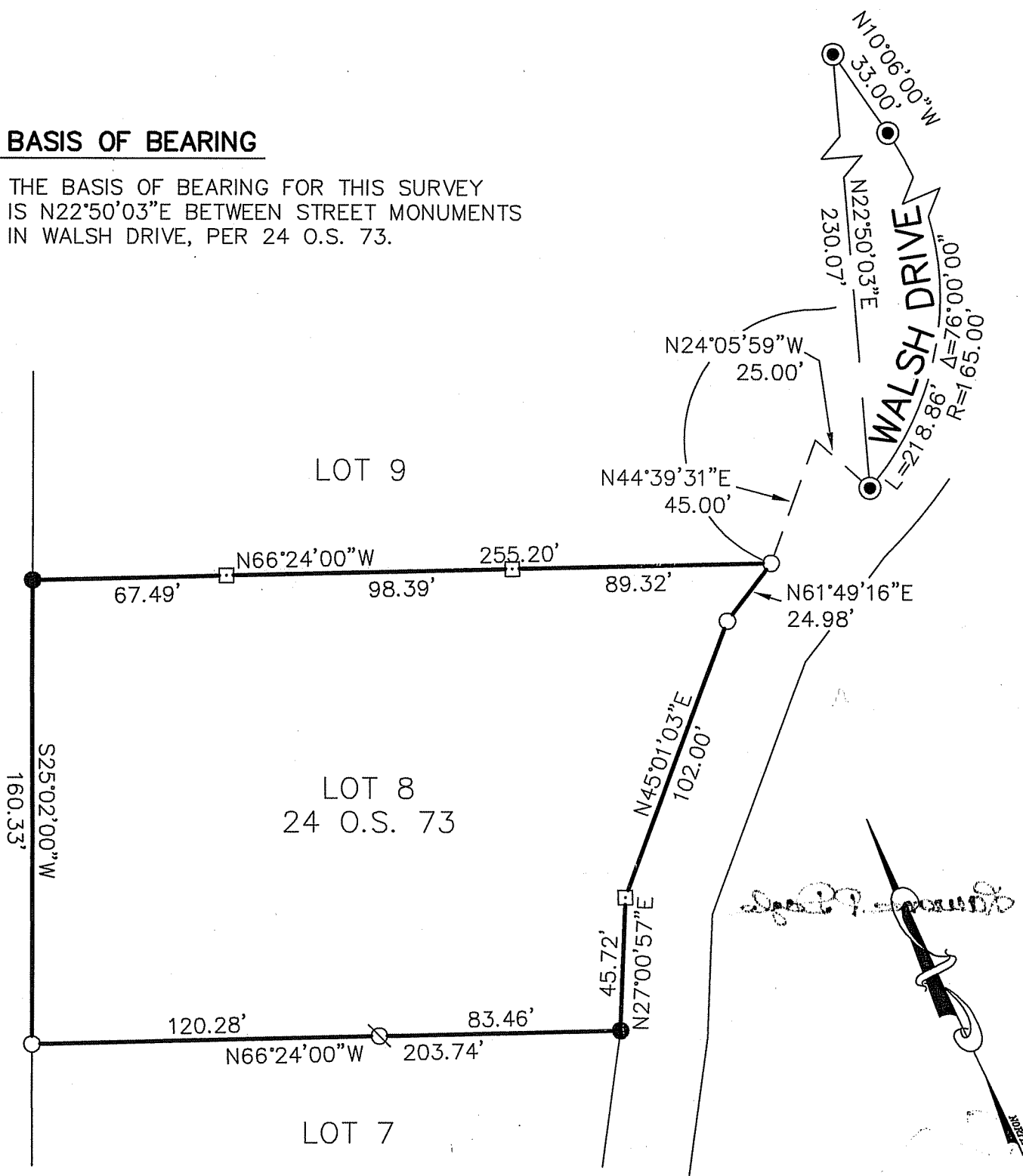
Title COUNTY SURVEYOR

County Surveyor's Comment _____



BASIS OF BEARING

THE BASIS OF BEARING FOR THIS SURVEY IS N22°50'03"E BETWEEN STREET MONUMENTS IN WALSH DRIVE, PER 24 O.S. 73.



LEGEND

- FOUND STREET MONUMENT
- FOUND REBAR & CAP, L.S. 4694
PER 24 O.S. 73
- SET HUB & TAG, L.S. 4694
- ⊗ SET NAIL & TAG, L.S. 4694
- SET 3/4" PIPE & PLUG, L.S. 4694



CORNER RECORD LOT 8, 24 O.S. 73 MARIN COUNTY CALIFORNIA	
SCALE: 1" = 50'	DRAWN BY:
DATE: 09/27/10	SHEET 1 OF 1
LAND SURVEYOR/CIVIL ENGINEER 100 HELENS LANE MILL VALLEY CA 94941 (415-388-9585)	
DRAWING NO. 2050-10	