

CORNER RECORD

Agency Index

CR25-041

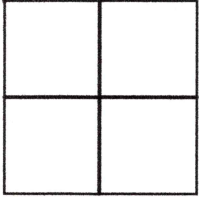
Document Number

070-051-06City of LARKSPUR

County of

MARIN

, California

Brief Legal Description I.N. 2023-027698**CORNER TYPE**

Government Corner ☐ Control ☐
Meander ☐ Property ☒
Rancho ☐ Other ☐

Date of Survey 03/03/25 & 03/05/25**COORDINATES (Optional)**

N. _____ E. _____
Elevation _____
Units Metric ☐ U.S. Survey Foot ☐
Horizontal Datum _____
Zone _____ Epoch Date _____
Vertical Datum _____

☐ Complies with Public Resources Code §§8801-8819
☐ Complies with Public Resources Code §§8890-8902

PLS Act Ref: ☒ 8765(d)☐ 8771☐ 8773☐ Other:Corner/
Monument: ☐ Left as found☒ Established☐ Rebuilt☐ Pre-Construction☐ Found and tagged ☐ Reestablished☐ Referenced☐ Post-Construction

Narrative of corner identified and monument as found, set, reset, replaced, or removed:

☒ See sheet #2 for description (s):**SURVEYOR'S STATEMENT**

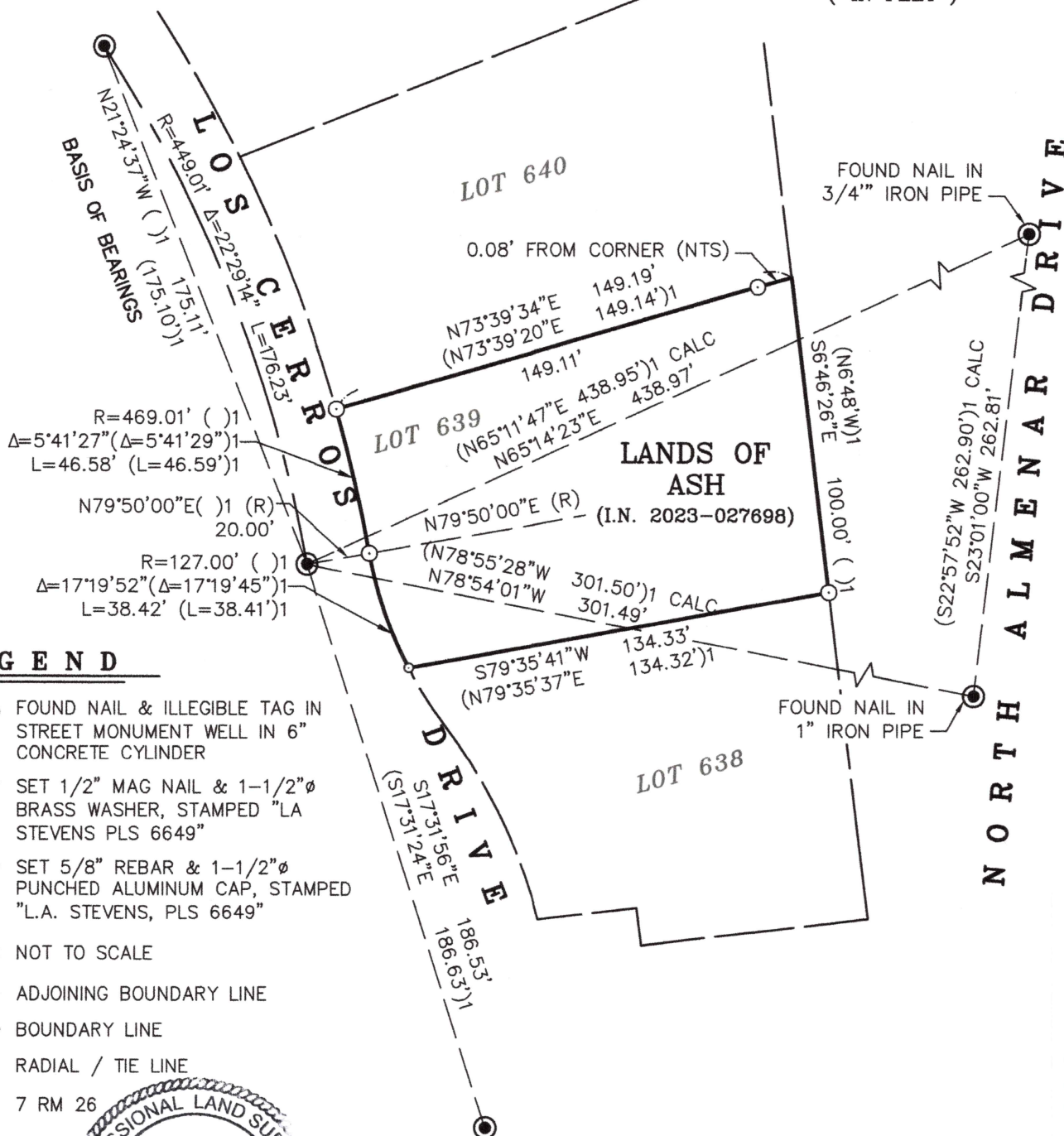
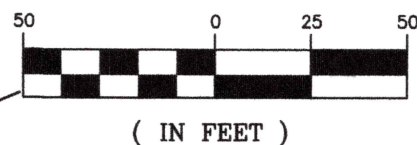
This Corner Record was prepared by me or under my direction in conformance with
the Professional Land Surveyors' Act on March 19, 2025

Signed *Lawrence A. Stevens* P.L.S. or R.C.E. No. 6649**COUNTY SURVEYOR'S STATEMENT**This Corner Record was received April 03, 2025and examined and filed April 14, 2025Signed *T.W. Park* P.L.S. or R.C.E. No. 8176Title County Surveyor

County Surveyor's Comment _____

ALL DISTANCES SHOWN ARE IN FEET AND DECIMALS THEREOF

GRAPHIC SCALE



CORNER RECORD LANDS OF ASH

(I.N. 2023-027698)

LARKSPUR

MARIN COUNTY
SCALE: 1" = 50'CALIFORNIA
MARCH, 2025

L.A. STEVENS & ASSOCIATES, INC.

PROFESSIONAL LAND SURVEYORS * (415) 382-7713
7 COMMERCIAL BLVD., SUITE 1 * NOVATO, CA 94949
JOB # 252412