

# CORNER RECORD

CR24-113

**070-241-35(b)**

County of Marin, California

**Brief Legal Description** Lot 1036 per 8 RM 86, Marin County Records; I.N. 2014-006635

### CORNER TYPE

**COORDINATES (Optional )**

N. \_\_\_\_\_ E. \_\_\_\_\_

Units

☐ Horizontal Datum

Zone \_\_\_\_\_ Epoch Date \_\_\_\_\_

Vertical Datum \_\_\_\_\_

☐ Complies with Public Resources Code §§8801-8819☐ Complies with Public Resources Code §§8890-8902☐ Other:☐ Pre-Construction☐ Post-Construction

☒ See sheet #2 for description (s):

### SURVEYOR'S STATEMENT

the Professional Land Surveyors' Act on July 3, 2024

Signed [Signature] P.L.S. or R.C.E. No. 6649



### COUNTY SURVEYOR'S STATEMENT

This Corner Record was received July 10, 2024

and examined and filed July 17, 2024

Signed I. K. P. P.L.S. [REDACTED] No. 8176

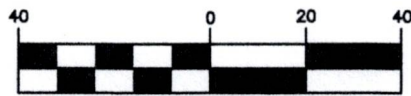
Title County Surveyor



County Surveyor's Comment \_\_\_\_\_

All distances shown are in feet and decimals thereof

### GRAPHIC SCALE



( IN FEET )

L1: N10°31'54"E 129.11'  
(N10°34'02"E 129.18')1  
L2: S83°30'22"W 67.99'  
(S83°30'W 68')1  
L3: S20°12'41"W 116.15'  
(N20°15'06"E 116.22')1

## LEGEND

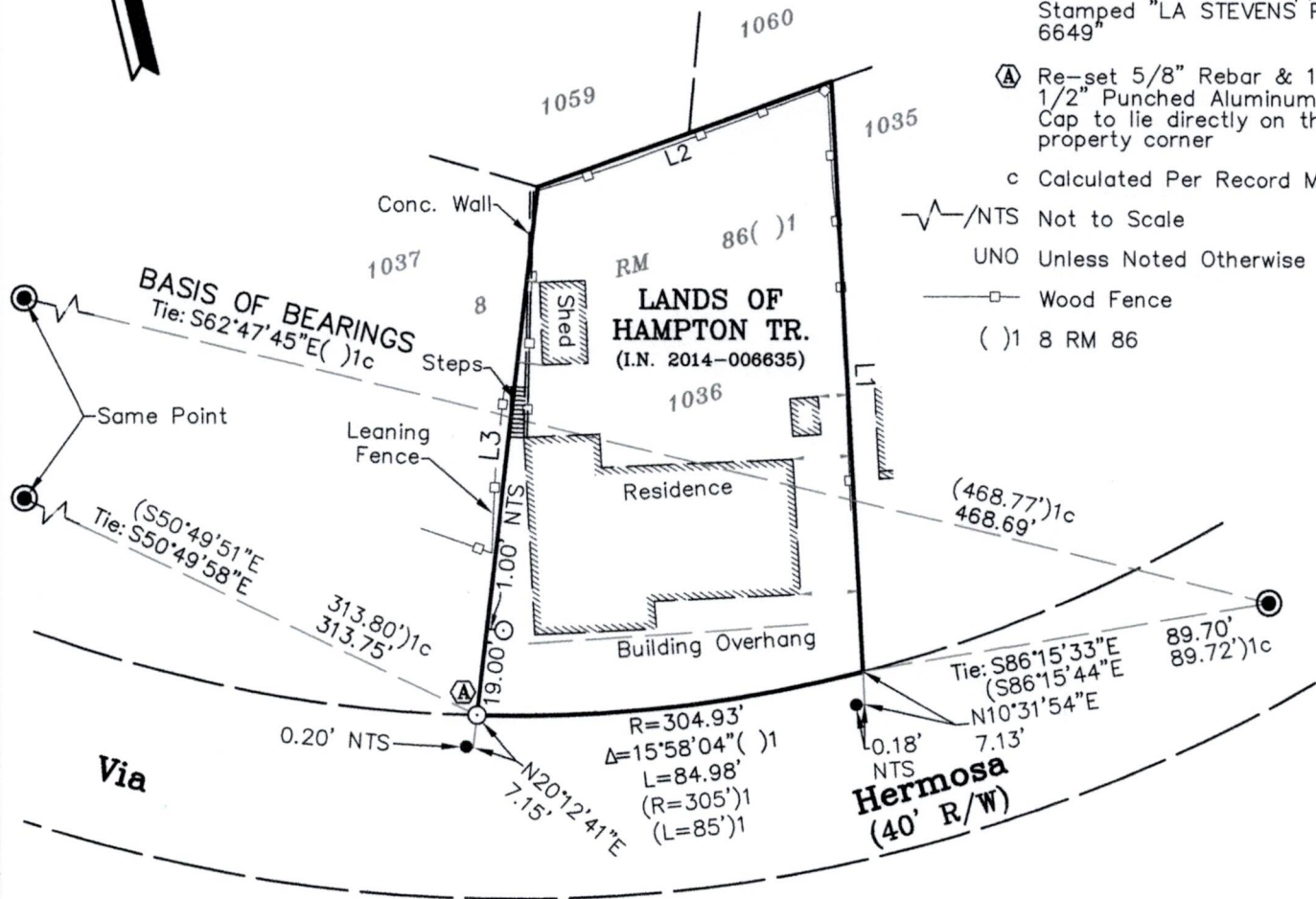
- Found Nail & Tag illegible in Concrete Cylinder, Standard Casing ( ), U.N.O.
  - Found Mag Nail & 1 1/2" Brass Washer, Stamped "LA STEVENS PLS 6649"
  - Set 5/8" Rebar & 1 1/2" Punched Aluminum Cap, Stamped "LA STEVENS PLS 6649"
  - Ⓐ Re-set 5/8" Rebar & 1 1/2" Punched Aluminum Cap to lie directly on the property corner
- c Calculated Per Record Map

—V—/NTS Not to Scale

UNO Unless Noted Otherwise

—□— Wood Fence

( )1 8 RM 86



**NOTE:** SEE PREVIOUS CORNER RECORD 070-241-35 INDEX  
NUMBER 20-050 FOR ADDITIONAL BOUNDARY RESOLUTION DETAILS



Lawrence A. Stevens, PLS 6649

Copyright © Lawrence A. Stevens 2024

**Corner Record**  
**LANDS OF**  
**HAMPTON TR.**

(Lot 1036, 8 RM 86)

Greenbrae  
Scale: 1" = 40'

California  
July, 2024

**L.A. Stevens & Associates, Inc.**

Professional Land Surveyors \* (415) 382-7713  
7 Commercial Blvd., Suite 1 \* Novato, CA 94949

Job # 202028