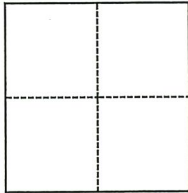


CORNER RECORD

Agency Index

Document Number

DPW#19-046

City of FAIRFAX County of MARIN, CaliforniaBrief Legal Description MONUMENT SHOWN ON MAP 27 OS 17 NEAR THE LANDS OF PERRY.**CORNER TYPE****COORDINATES (Optional)**

- ☐ Government Corner ☒ Control
☐ Meander ☐ Property
☐ Rancho ☐ Other

Date of Survey MARCH 15, 2019

N. _____ E. _____

Elevation _____

Units

☐ Metric☐ U.S. Survey Foot

Horizontal Datum _____

Zone _____ Epoch Date _____

Vertical Datum _____

☐ Complies with Public Resources Code §§8801-8819☐ Complies with Public Resources Code §§8890-8902

PLS Act Ref.:

☐ 8765(d)☒ 8771☐ 8773☐ Other:Corner/
Monument:☐ Left as found☐ Established☐ Rebuilt☒ Pre-Construction☐ Found and tagged☒ Reestablished☒ Referenced☐ Post-Construction

Narrative of corner identified and monument as found, set, reset, replaced, or removed:

☐ See sheet #2 for description(s):

FOUND STANDARD STREET MONUMENT WITH BRASS DISC STAMPED MARIN COUNTY PUBLIC WORKS NEAR THE LANDS OF PERRY AS SHOWN ON 27 OS 17; SET FOUR REFERENCE TIES; TO BE RE-ESTABLISHED WITH COUNTY OF MARIN WELL MONUMENT PER UCS DWG #300. (SEE ATTACHED SKETCH) NO DETERMINATION WAS MADE AS TO THE VALIDITY OF THE MONUMENT SHOWN HEREON OR ITS RELATION TO PROPERTY LINES IN THE AREA.

SURVEYOR'S STATEMENT

This Corner Record was prepared by me or under my direction in conformance with

the Professional Land Surveyors' Act on

06/20/22

Signed

P.L.S. or R.C.E. No.

9292**COUNTY SURVEYOR'S STATEMENT**

This Corner Record was received

MAY 9, 2019

and examined and filed

6/20/22

Signed

P.L.S. or R.C.E. No.

8176

Title

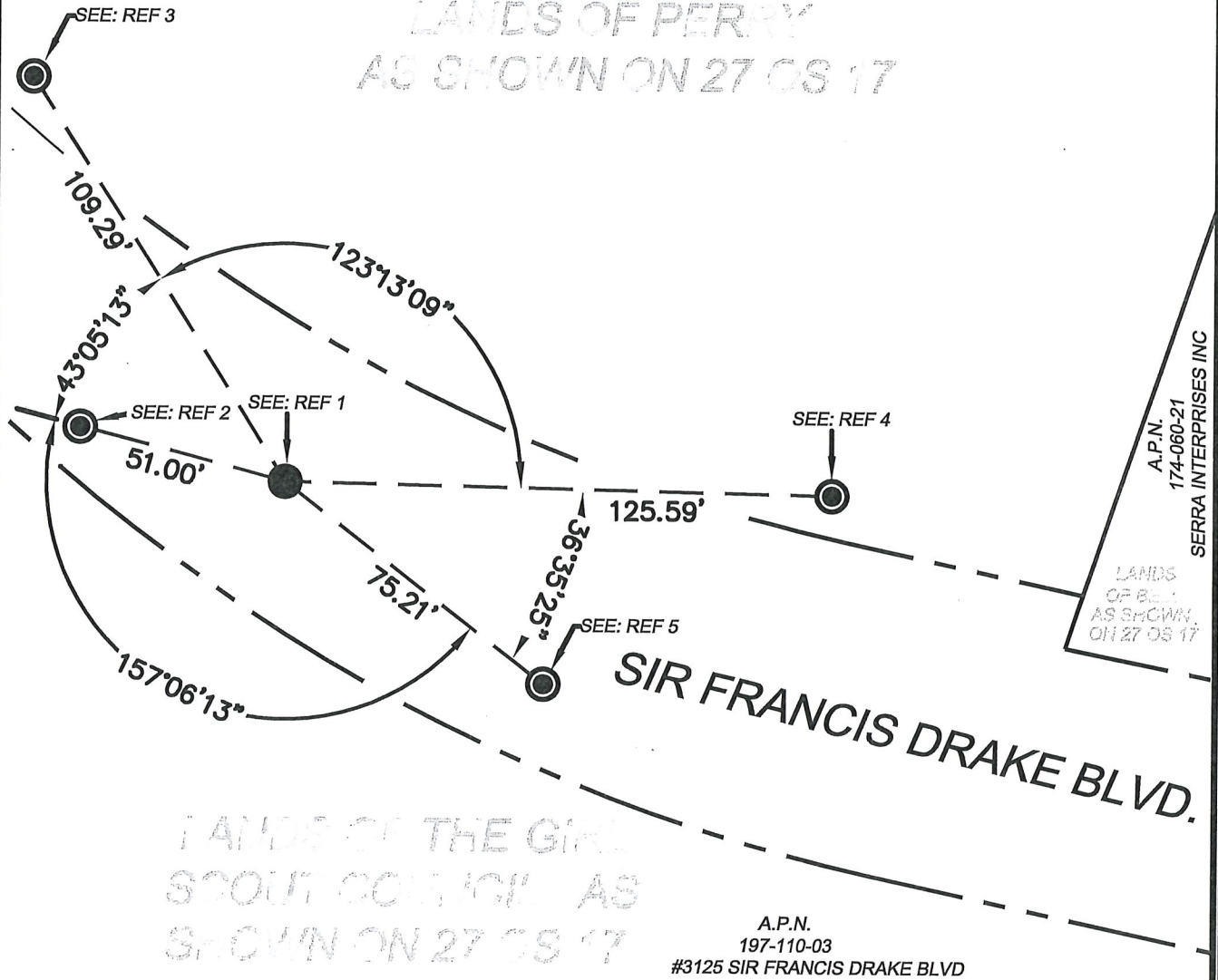
County Surveyor

County Surveyor's Comment



A.P.N.
174-060-06
#3000 SIR FRANCIS DRAKE BLVD

LANDS OF PERRY
AS SHOWN ON 27 OS 17



- REF 1: FOUND STANDARD STREET MONUMENT WITH BRASS DISC STAMPED MARIN COUNTY PUBLIC WORKS PER 27 OS 17 REPLACED WITH STANDARD COUNTY MONUMENT PER UNIFORM CONST STANDARDS DRAWING #300.
- REF 2: SET WASHER STAMPED "MARIN COUNTY SURVEYOR" IN SIDE OF TREE.
- REF 3: SET WASHER STAMPED "MARIN COUNTY SURVEYOR" IN SIDE OF TREE.
- REF 4: SET WASHER STAMPED "MARIN COUNTY SURVEYOR" IN SIDE OF TREE.
- REF 5: SET WASHER STAMPED "MARIN COUNTY SURVEYOR" IN ASPHALT DRIVEWAY.



27 OS 17

COUNTY OF MARIN
DEPARTMENT OF PUBLIC WORKS
SURVEY SECTION

SCALE: 1"=40'

CORNER RECORD

JOB No. 2019-015