

CORNER RECORD

COUNTY OF MARIN, CALIFORNIA.

AP No. 174-060-31

CORNER TYPE:

Corner for Record of Survey (16 O.S. 9)

CORNER IDENTIFICATION - DATE OF VISIT:

May 23, 1989

ACTION ON CORNER. re-established obliterated corner.

PHYSICAL DESCRIPTION OF CORNER FOUND; EVIDENCE AND METHOD USED TO IDENTIFY OR REESTABLISH
Re-established by measurements from the next adjacent found original points.
Found points have steel fence post witnesses.

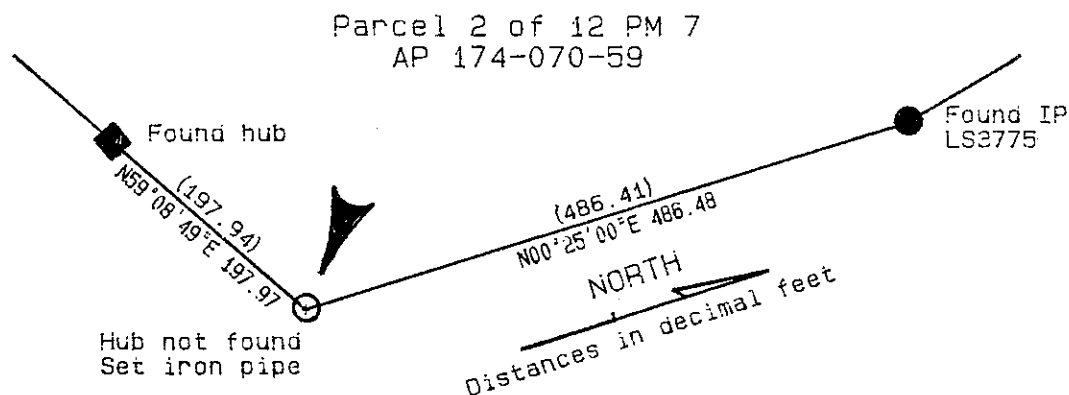
PHYSICAL DESCRIPTION OF MONUMENTS REBUILT OR PERPETUATED:

Set 18" by 0.75" iron pipe with yellow plastic plug marked
"County Surveyor", about 0.4 ft. distant from steel fence post witness.

CALIFORNIA COORDINATE SYSTEM:

Not used.

SKETCH: (Include reference tie or witness points, remarks and topo of area)



16 OS 9

AP 174-060-31

Marin County Open Space District

Scale 1" = 150'

SURVEYOR'S CERTIFICATE

This corner record was prepared
by me or under my direction in
conformance with the Land
Survey Act of May 30, 1989.

Signed:

No. 3288

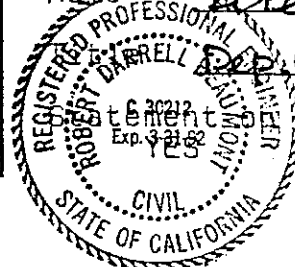
Exp. 6/30/92 Seal

L.S. 3288

COUNTY SURVEYOR'S CERTIFICATE

The corner record was received
on 6/8, 1989 and examined
and filed 6/9, 1989 by

Name



back of sheet?

NO