

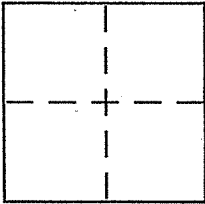
CORNER RECORD

Document Number 174.083.10

City of FAIRFAX

County of MARIN, California

Brief Legal Description LOT 197, MAP OF OAK MANOR, Unit 3, 9 RM 44



CORNER TYPE

Government Corner ☐ Control ☐
 Meander ☐ Property ☐
 Rancho ☐ Other ☐
 Date of Survey 2/1/2007

COORDINATES (Optional)

N. _____
 E. _____
 Zone _____ NAD27 ☐ NAD83 ☐
 NAD83 Epoch _____
 Elev. _____
 Vert. Datum: NGVD29 ☐ NAVD88 ☐
 Meas. Units: Metric ☐ Imperial ☐

Corner - Left as found ☐ Found and tagged ☐ Established ☐ Reestablished ☒ Rebuilt ☐

Identification and type of corner found: Evidence used to identify or procedure used to establish or reestablish the corner:

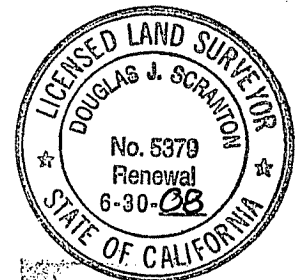
REESTABLISH A PORTION OF THE NORTHERLY LINE OF LOT 197, MAP OF OAK MANOR, Unit 3, 9 RM 44 & ALSO the RIGHT OF WAY LINE ON VAN COURT & A PORTION OF THE SOUTHERLY LINE OF SAID LOT 197 FROM EXISTING STANDARD STREET MONUMENTS PER SAID 9 RM 44 ON MARIELE DRIVE.

A description of the physical condition of the monument as found and as set or reset: Refer to sketch on reverse side for details; set 1/2" rebar with PLASTIC CAP AFFIXED TO TOP & STAMPED SCRANTON, PLS 5379 & DRIVEN FLUSH WITH SURROUNDING GRADE.

SURVEYOR'S STATEMENT

This Corner Record was prepared by me or under my direction in conformance with the Land Surveyor's Act on FEBRUARY 13 2007

Signed Douglas J. Scranton P.L.S. or R.C.E. No. PLS 5379



COUNTY SURVEYOR'S STATEMENT

This Corner Record was received FEBRUARY 15, 2007

and examined and filed MARCH 26, 2007

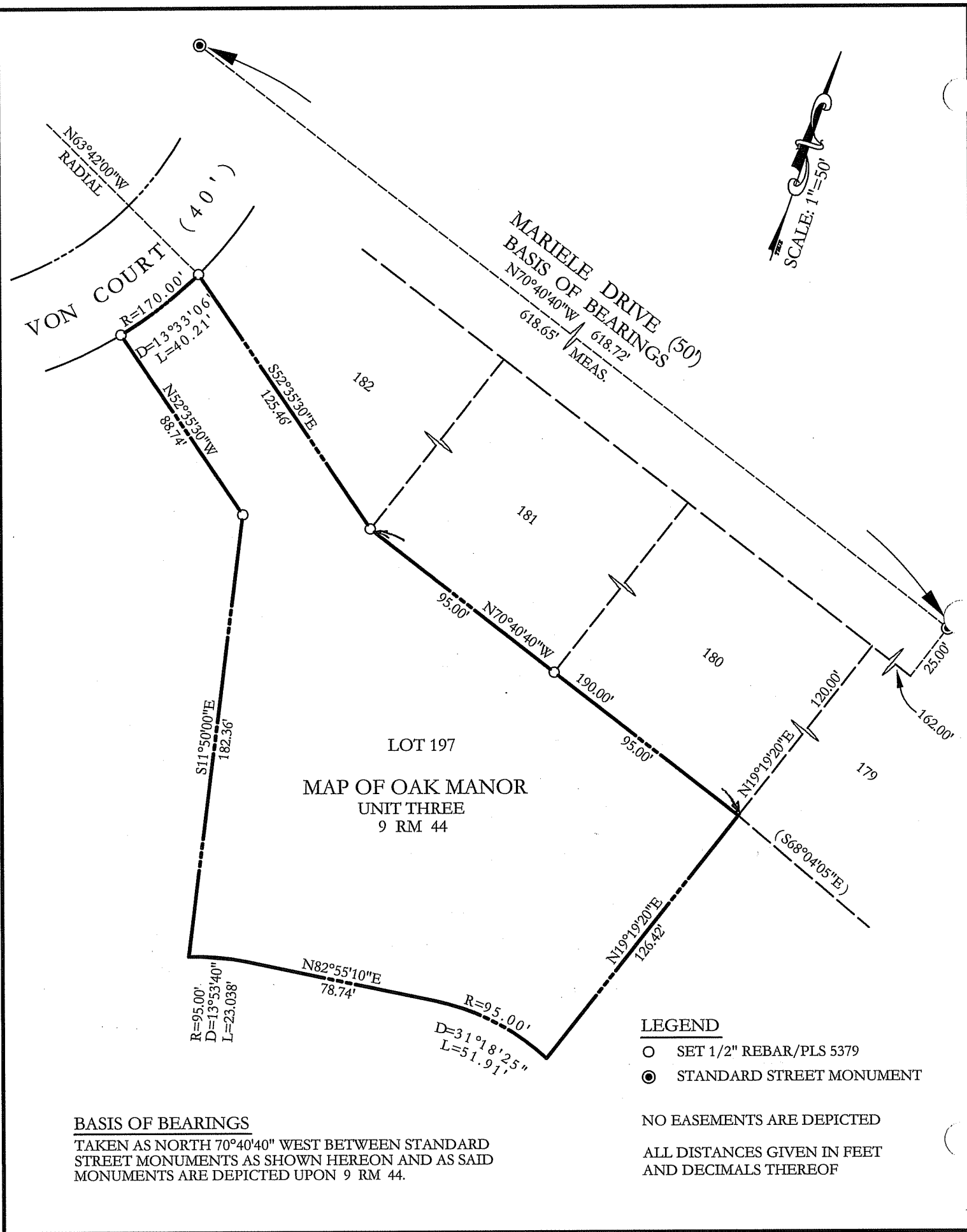
Signed [Signature] P.L.S. or R.C.E. No. _____

Title COUNTY SURVEYOR



County Surveyor's Comment _____

PREPARED BY: DO SCRANTON SURVEYING NOVATO, CA



LOT 197
MAP OF OAK MANOR
UNIT THREE
9 RM 44

LEGEND

- SET 1/2" REBAR/PLS 5379
- STANDARD STREET MONUMENT

BASIS OF BEARINGS

TAKEN AS NORTH 70°40'40" WEST BETWEEN STANDARD STREET MONUMENTS AS SHOWN HEREON AND AS SAID MONUMENTS ARE DEPICTED UPON 9 RM 44.

NO EASEMENTS ARE DEPICTED
ALL DISTANCES GIVEN IN FEET
AND DECIMALS THEREOF