

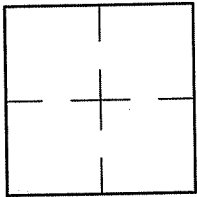
# CORNER RECORD

Document Number A.P. 174-102-22

City of FAIRFAX

County of MARIN, California

Brief Legal Description PARCEL 1 PER 4 P.M. 47



## CORNER TYPE

Government Corner ☐ Control ☐  
 Meander ☐ Property ☒  
 Rancho ☐ Other ☐  
 Date of Survey 11/10/10

## COORDINATES (Optional)

N.                       
 E.                       
 Zone                      NAD27 ☐ NAD83 ☐  
 NAD83 Epoch                       
 Elev.                      NGVD29 ☐ NAVD88 ☐  
 Vert. Datum:                      Metric ☐ Imperial ☐  
 Meas. Units:                     

Corner— Left as found ☐ Found and tagged ☐ Established ☐ Reestablished ☒ Rebuilt ☐

Identification and type of corner found: Evidence used to identify or procedure used to establish or reestablish the corner:  
REESTABLISHED THE SOUTHERLY LINE OF PARCEL 1 USING STREET MONUMENTS PER 4 P.M. 47 AND AS  
SHOWN ON SHEET 2.

A description of the physical condition of the monument as found and as set or reset: SEE SHEET 2.

## SURVEYOR'S STATEMENT

This Corner Record was prepared by me or under my direction in conformance with

the Land Surveyor's Act on NOVEMBER 17, 2010

Signed Lawrence P. Doyle

P.L.S. 4694



## COUNTY SURVEYOR'S STATEMENT

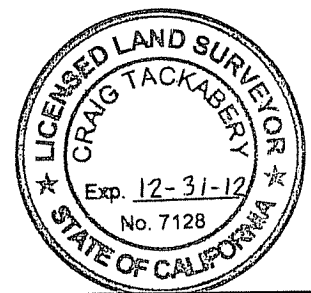
This Corner Record was received JANUARY 7, 2011

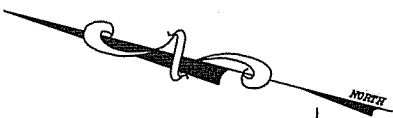
and examined and filed FEBRUARY 8, 2011

Signed [Signature] P.L.S. or R.G.E. No. 7128

Title COUNTY SURVEYOR

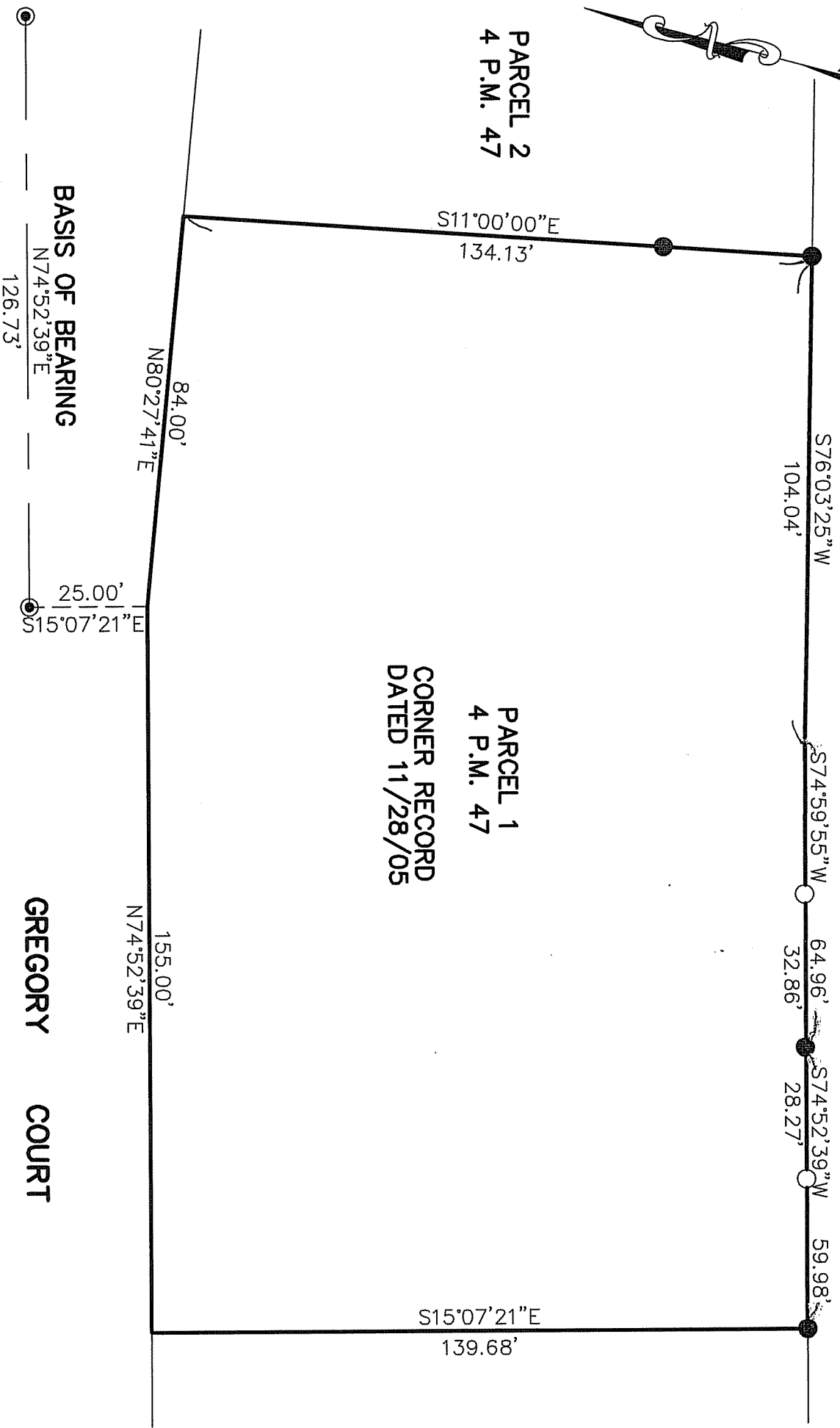
County Surveyor's Comment                     





PARCEL 2  
4 P.M. 47

PARCEL 1  
4 P.M. 47  
CORNER RECORD  
DATED 11/28/05



**LEGEND**

- FOUND STREET MONUMENT PER 4 P.M. 47
- FOUND POINT PER CORNER RECORD A.P. 174-102-22
- SET PIPE/PLUG L.S. 4694

**GREGORY COURT**



CORNER RECORD A.P. 174-102-22	
FAIRFAX MARIN COUNTY	CALIFORNIA
SCALE: 1" = 30'	DRAWN BY:
DATE: 11/17/10	SHEET 2 OF 2
LAWRENCE P. DOYLE LAND SURVEYOR/CIVIL ENGINEER 100 HELENS LANE MILL VALLEY CA 94941 (415-388-9585)	
DRAWING NO. 1875	