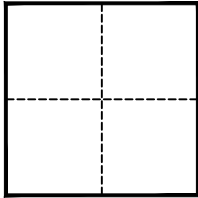


# CORNER RECORD

Agency Index CR24-117Document Number 174-131-33 (Adj)(b)City of FAIRFAX County of MARIN, CaliforniaBrief Legal Description 2-1/2" BRASS DISK WITH PUNCH, STAMPED "RCE 11629", IN WELL, DOWN 0.8' PER 15 RM 05.**CORNER TYPE****COORDINATES (OPTIONAL)**

- ☐ Government Corner ☒ Control  
☐ Meander ☐ Property  
☐ Rancho ☐ Other

Date of Survey JULY 17, 2024

N. \_\_\_\_\_ E. \_\_\_\_\_

Elevation \_\_\_\_\_

Units ☐ Metric ☐ U.S. Survey Foot

Horizontal Datum \_\_\_\_\_

Zone \_\_\_\_\_ Epoch Date \_\_\_\_\_

Vertical Datum \_\_\_\_\_

☐ Complies with Public Resources Code §§8801-8819☐ Complies with Public Resources Code §§8890-8902PLS Act Ref.: ☐ 8765(d) ☒ 8771 ☐ 8773 ☐ Other:

Corner/  
Monument: ☒ Left as found ☐ Established ☐ Rebuilt ☒ Pre-Construction  
☐ Found and tagged ☐ Reestablished ☒ Referenced ☐ Post-Construction

Narrative of corner identified and monument as found, set, reset, replaced, or removed:

☒ See sheet #2 for description(s):

SEE REFERENCE POINTS ON PAGE 2, USED FOR PERPETUATION THROUGH CONSTRUCTION.

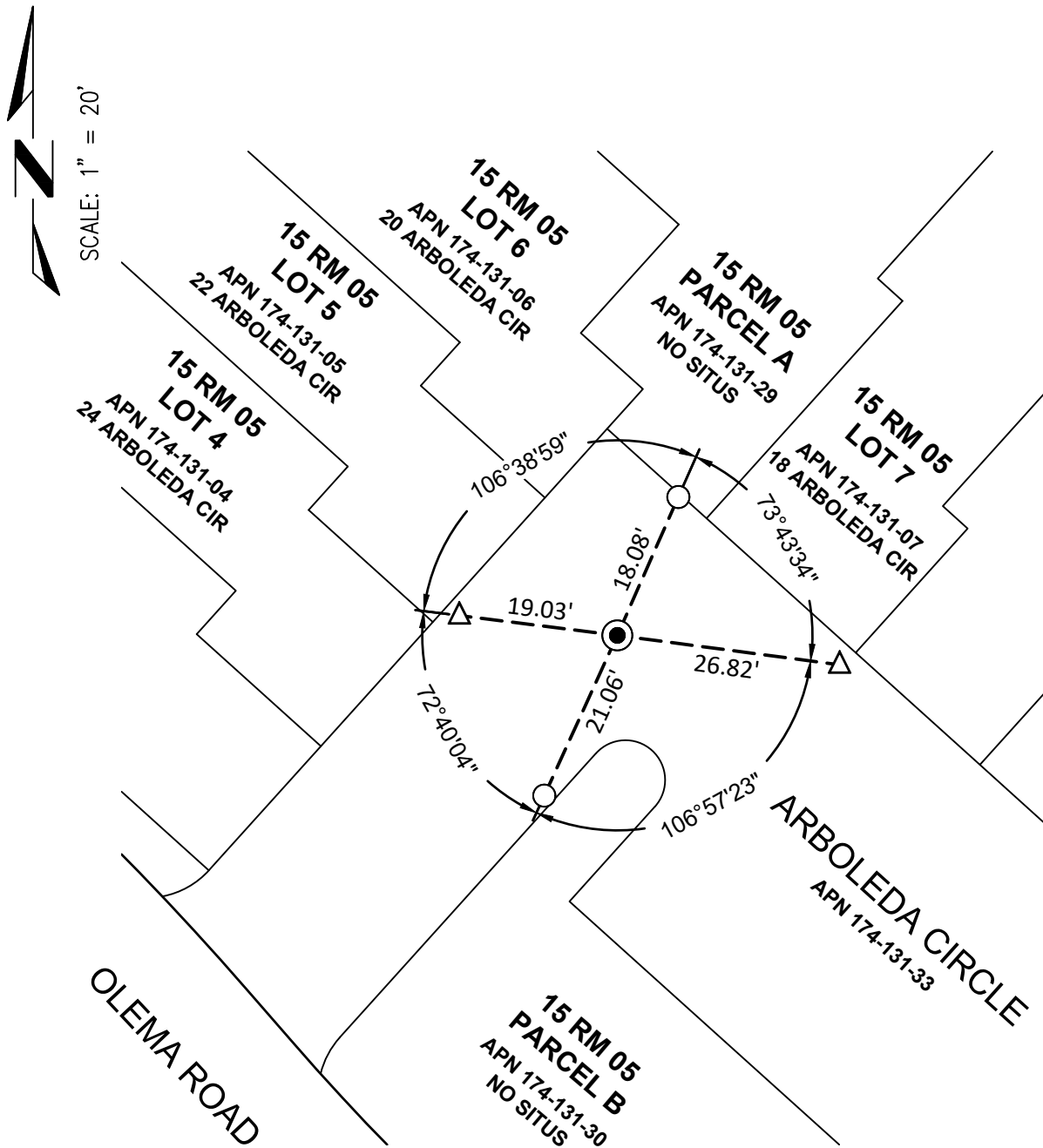
**NOTE:**

NO WARRANTY IS EXPRESSED OR IMPLIED THAT THE MONUMENTS SHOWN HEREON HAVE BEEN SET IN THE CORRECT LOCATION BY THE ORIGINAL SURVEYOR OR ENGINEER.

**SURVEYOR'S STATEMENT**This Corner Record was prepared by me or under my direction in conformance with  
the Professional Land Surveyors' Act on JULY 29, 2024Signed Joel F. Paulson P.L.S. or R.C.E. No. \_\_\_\_\_**COUNTY SURVEYOR'S STATEMENT**This Corner Record was received July 30, 2024and examined and filed August 14, 2024Signed T.W. Park P.L.S. 8176 No. 8176Title County Surveyor

County Surveyor's Comment



**LEGEND**

- FOUND 2-1/2" BRASS DISK WITH PUNCH, STAMPED "RCE 11629", IN WELL, DOWN 0.8'
- △ SET MAG NAIL IN ASPHALT, WITH 1-1/2" ALUMINUM WASHER STAMPED "REF PT LS 6637"
- SET MAG NAIL IN ASPHALT, WITH 3/4" BRASS TAG STAMPED "RF PT LS 6637"

THE PURPOSE OF THIS RECORD IS TO DOCUMENT THE PERPETUATION OF FOUND MONUMENT(S) PURSUANT TO THE PLS ACT SEC. 8771. NO CLAIM IS MADE REGARDING THE CORRECTNESS OF THE POSITION(S) OF SAID MONUMENT(S), NOR THE DIMENSIONAL RELATIONSHIP TO STREET CENTERLINE OR PROPERTY BOUNDARIES.