

APN 174-200-04 04

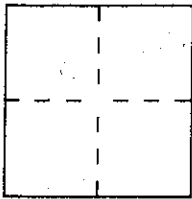
# CORNER RECORD

Document Number 21 RM 20

City of Fairfax

County of Marin, California

Brief Legal Description #4 Snodden Lane, Fairfax CA



## CORNER TYPE

Government Corner ☐ Control ☐  
 Meander ☐ Property ☒  
 Rancho ☐ Other ☐  
 Date of Survey 6/11/97

## COORDINATES (Optional)

N. \_\_\_\_\_  
 E. \_\_\_\_\_  
 Zone \_\_\_\_\_ Datum \_\_\_\_\_  
 Elev. \_\_\_\_\_

Corner — Left as found ☐ Found and tagged ☐ Established ☒ Reestablished ☐ Rebuilt ☐

Identification and type of corner found: Evidence used to identify or procedure used to establish or reestablish the corner:

Set 1/2" Rebar & Cap LS 5290 at Lot Corner  
(see Map sheet) We found numerous original  
corners that all measured very well. (again see Map).

A description of the physical condition of the monument as found and as set or reset: \_\_\_\_\_

## SURVEYOR'S STATEMENT

This Corner Record was prepared by me or under my direction in conformance with  
 the Land Surveyors' Act on June 12<sup>th</sup> 1997.

Signed David Harp L.S. or R.C.E. Number LS 5290

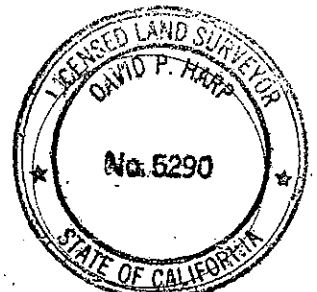
## COUNTY SURVEYOR'S STATEMENT

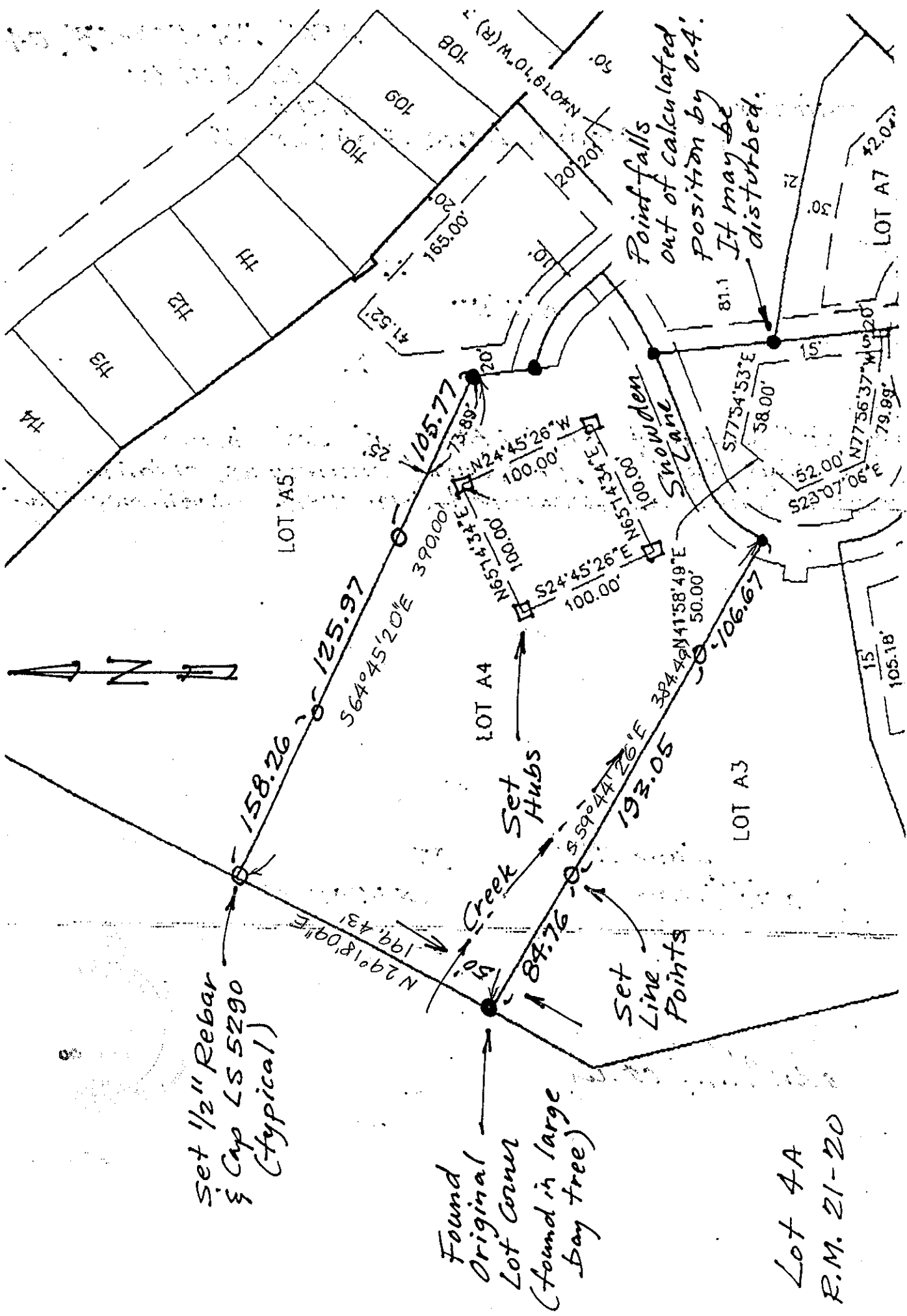
This Corner Record was received JUNE 13 1997 and examined

and filed JUNE 16 1997.

Signed John M. Woolley Title Deputy

County Surveyor's Comment \_\_\_\_\_





Lot 4A  
R.M. 21-20

David Harp & Associates  
Professional Land Surveyors  
101 Florbel Ave. San Anselmo, CA 94960  
415-453-7624